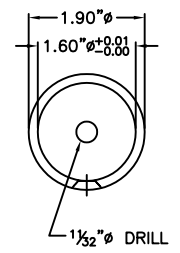
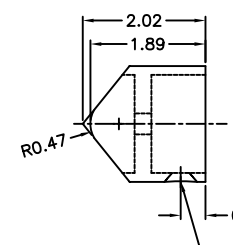
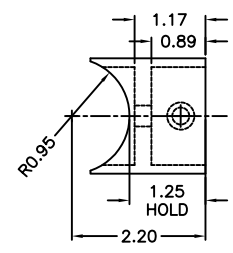
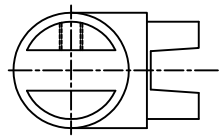
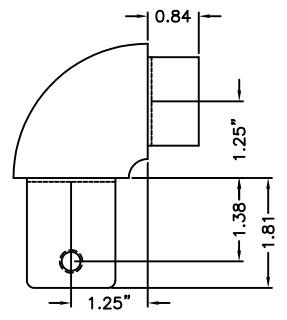


GRAB RAIL MOUNT  
LH SHOWN RH OPP

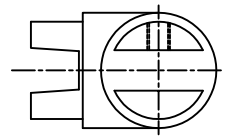
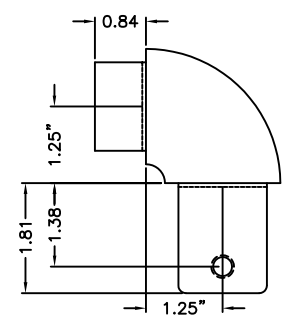
( ) REQ'D LH. ( ) REQ'D RH.



3/32"ø DRILL &  
C'SNK FOR 1/4" FHMS  
#155-E TEE



#130-MR MODIFIED  
RIGHT HAND



#130-ML MODIFIED  
LEFT HAND

THIS DRAWING AND ALL THE INFORMATION THEREON IS THE PROPERTY OF THE HOLLAENDER MFG. CO. IS CONFIDENTIAL AND MUST NOT BE MADE PUBLIC, NOR COPIED, NOR USED, TO THE DISADVANTAGE OF SAID HOLLAENDER MFG. CO. AND IS SUBJECT TO RETURN ON DEMAND.  
COPYRIGHT 2008  
HOLLAENDER MANUFACTURING CO.

NO.	REVISIONS	DATE	APPROVED

**Hollaender**<sup>®</sup>  
STRUCTURAL ENGINEERING GROUP  
10285 WAYNE AVENUE  
CINCINNATI, OH 45215-6399  
PHONE: (800) 772-8800 FAX: (502) 772-8806  
WWW.HOLLAENDER.COM

PROJECT  
GRAB RAIL  
POST MOUNTING

CUSTOMER  
HOLLAENDER MANUFACTURING  
CINCINNATI, OH.

DESCRIPTION  
MODIFY/FABRICATION  
ASSEMBLY DRAWING

DESIGN BY GG	APPROVED BY BW	DATE 2-19-08
PROJECT NO. N/A		SCALE NTS
PART NO. AA-M10-C22-A41		REVISED BY 4257-S
MATERIAL ALUMINUM 6063-T6		SHEET 1 OF 1

